

POLAR FLEECE SOCKS

Supplies:

Polar fleece fabric, the yardage will depend on the size you are making. Generally, 1/2 yard for kid sizes and 5/8 to 1 yard for adult.

Rubber “grippy” fabric. Again, yardage will depend on the size you are making. I have found this fabric where you’d find muslin, pre-quilted cotton, etc. It is a flannel-like fabric, with dots of rubber grip, like you’d see on the bottom of sleeper PJs.

Thread to match fleece.

General Instructions:

1/4” seams all around.

Place pattern pieces on fleece with grain line going in the direction of the **least** stretch. This is usually the up/down grain.

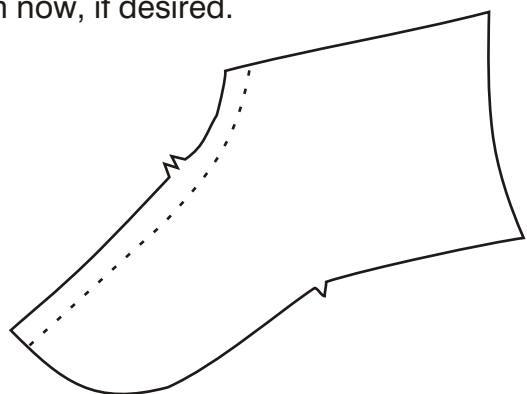
Cut 2 soles from fleece, and cut 2 soles from the grippy fabric. Cut 2 cuff pieces from fleece. Cut 4 sock tops from fleece. When you tug slightly on fleece, the fleece will curl to the wrong side. Right/wrong sides aren’t overly important for these socks, but some fleece may have an anti-pilling treatment applied to the right side.

Serged seams aren’t too comfy on the inside. Instead, use a sewing machine with either a very narrow normal length zig-zag, or a stretch (lightning) stitch set at 3.0 mm.

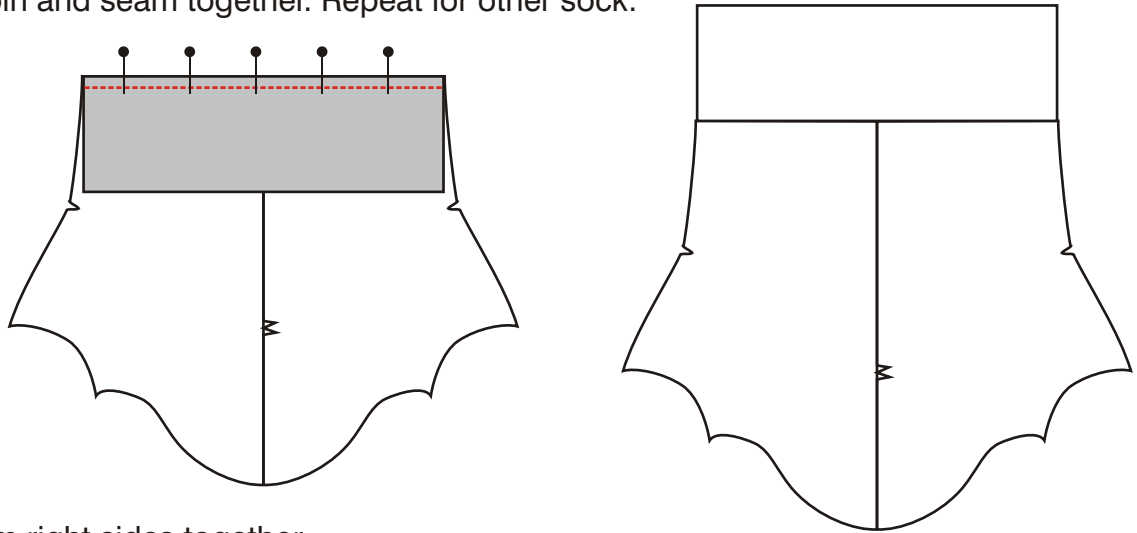
Sewing Instructions:

Place 2 sock top pieces right sides together. Match and pin the **double-notched** edges. **BE SURE YOU ARE SEWING ON THE DOUBLE-NOTCHED EDGES FOR THIS STEP.** Your natural inclination will be to sew the seam that makes the sock look more like a boot -- so double-check that you’re sewing those double-notched edges. Ripping out a stretch stitch from fleece is not fun. Ask me how I know!

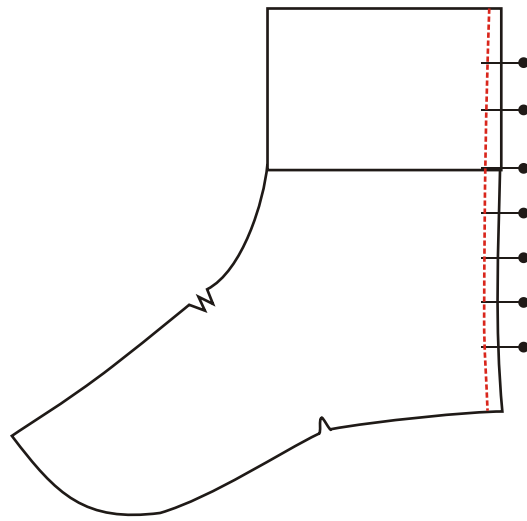
An applique or embroidery may be added over this seam now, if desired.



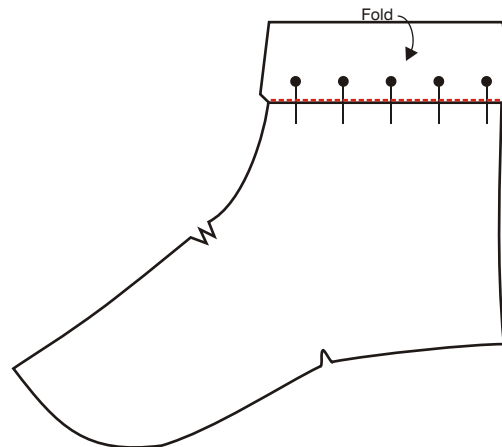
Place one long edge of the cuff on the angle edge of one top piece, right sides together. Pull/stretch to align edges, pin and seam together. Repeat for other sock.



Pin the heel seam right sides together with the ankle seam open. Place one pin the well of the seam so that the ankle seam will line up when finished. Sew the heel seam. Repeat for the other sock.

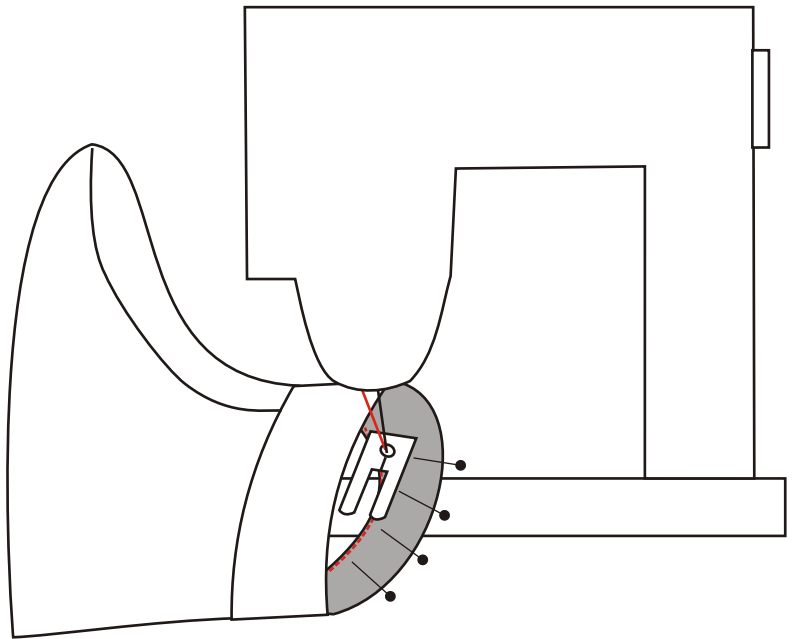


With the sock **wrong side out**, fold the cuff over to cover the ankle seam. Pin in place with several pins. Repeat for the other sock.

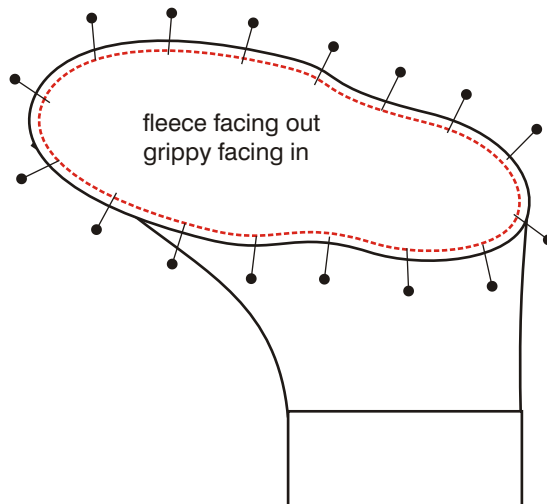


Sew the edge of the cuff in place by sewing in the well of the ankle seam through seam and cuff edge. (Stitch in the ditch.) Repeat for other sock. Trim near seam as necessary.

You may think, at first glance, that it makes more sense to sew the cuff before sewing the heel seam. But you'd get a big lump at the back of the heel that way. Trust me, the best way is to stitch in the ditch while the sock is wrong side out. Again, ask me how I know!



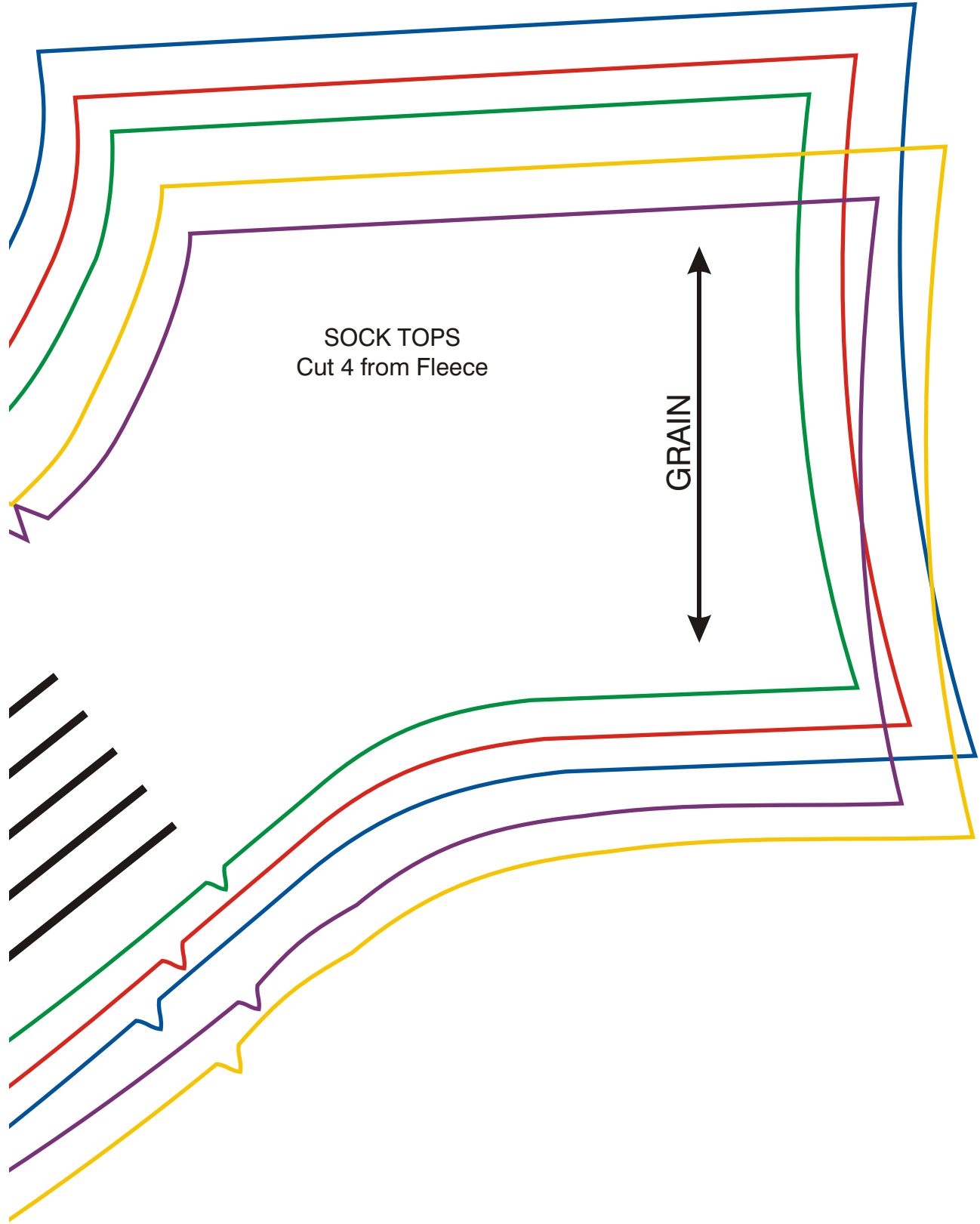
Stack one grippy sole on top of one fleece sole, with the grippy side out. Treat these two soles as one piece. The grippy side is the right side. Pin the sole to the bottom edge of sock top with right sides together. Be sure toes and heels are lined up correctly and start by pinning the center toes together and then the center heels. Then ease the sock top around the sole. Seam together around the sole. Repeat for the other sock.



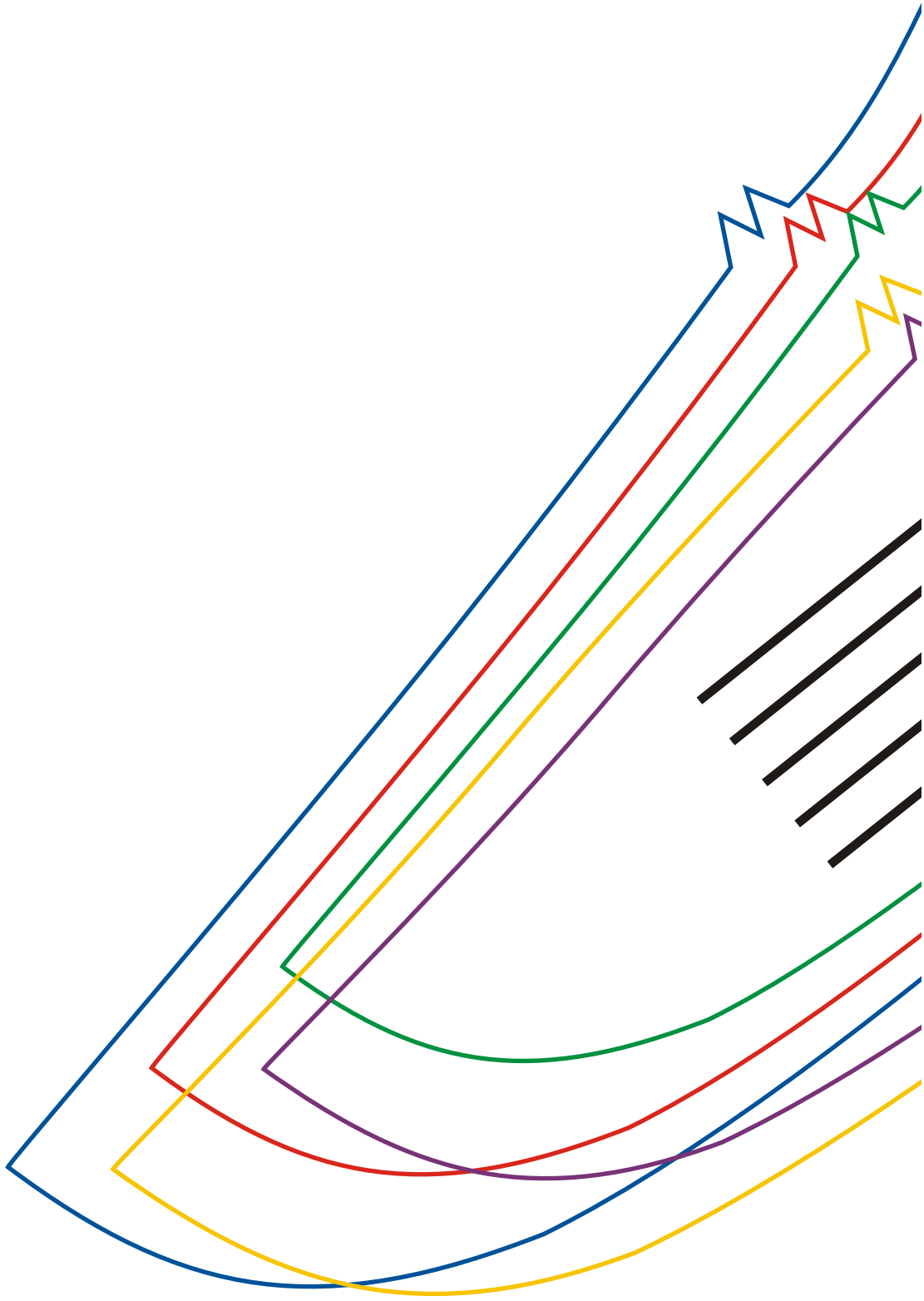
Although this picture shows the seaming on the bottom, I actually found it easier to sew from the top of the sock, soles next to the stitch plate. Do what feels best to you!

Voila! You have a new pair of snugly socks!

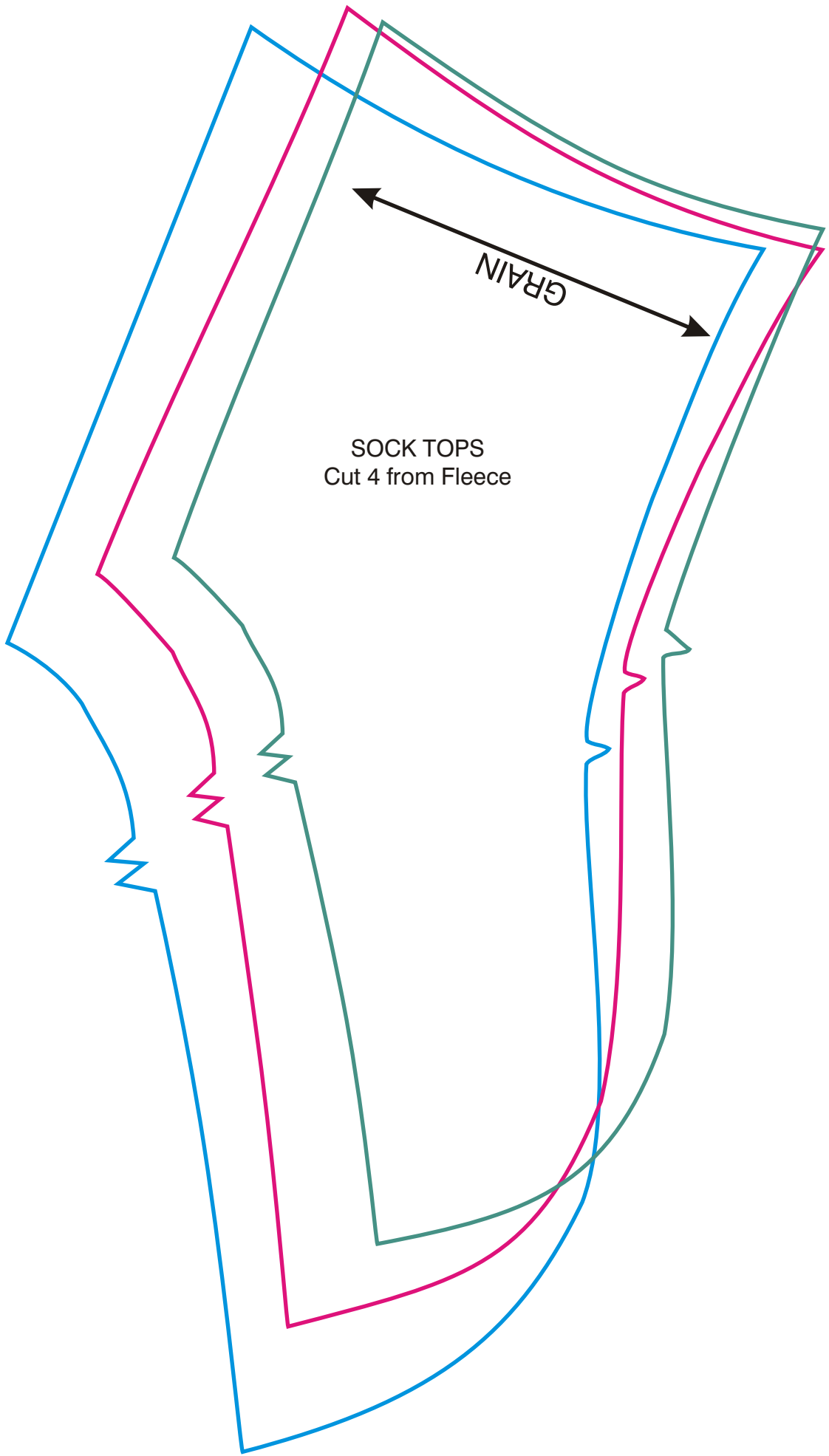
- 11
- 10
- 9
- 8
- 7
- 6
- 5
- 4
- 3
- 2
- 1



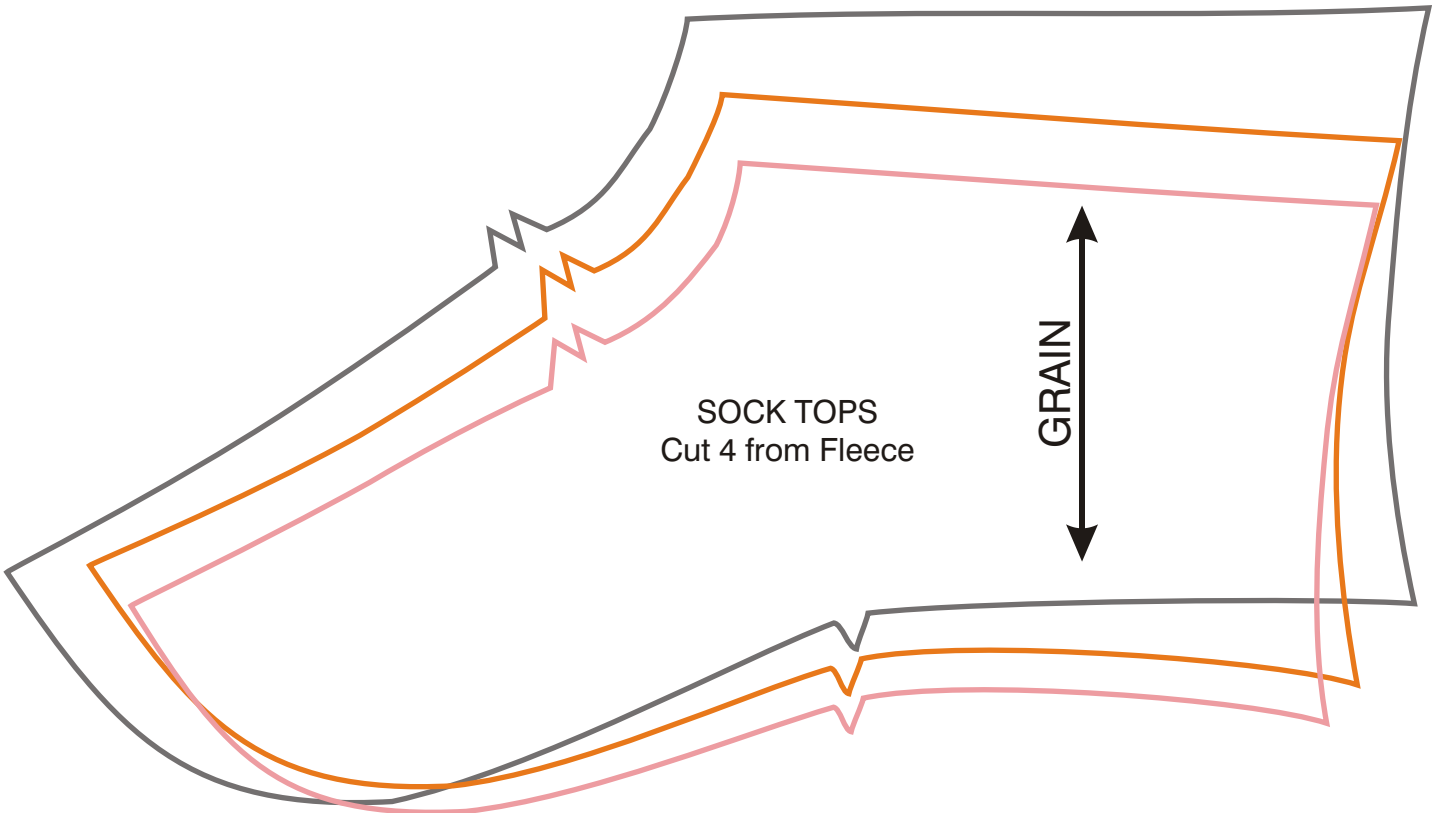
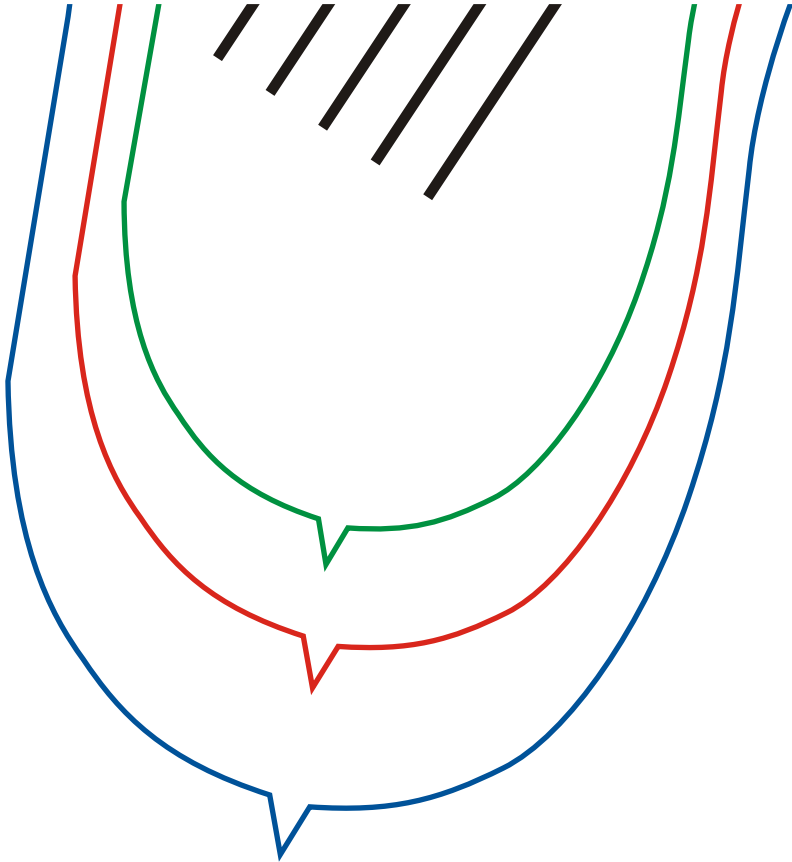
- 11
- 10
- 9
- 8
- 7
- 6
- 5
- 4
- 3
- 2
- 1



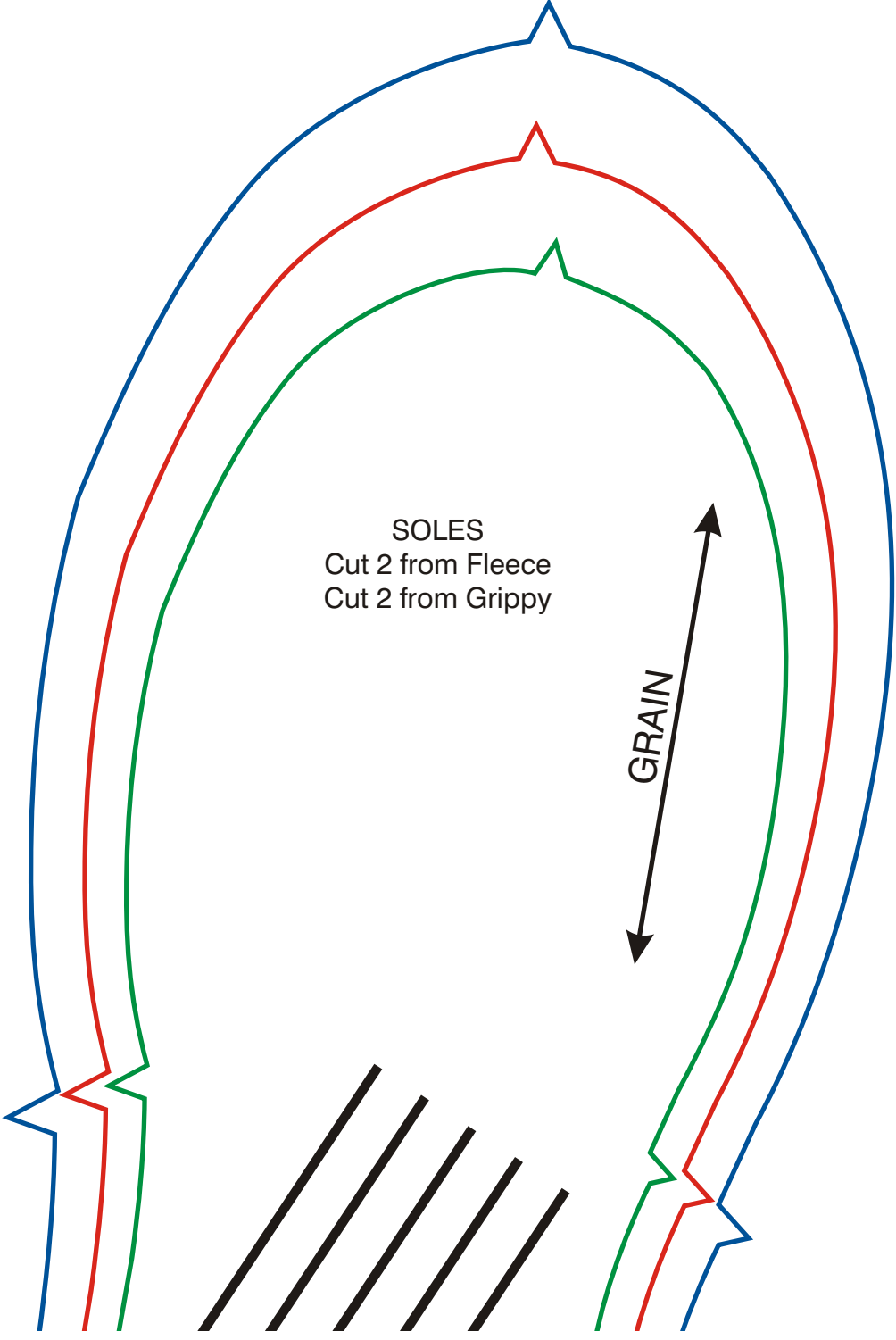
- 11
- 10
- 9
- 8
- 7
- 6
- 5
- 4
- 3
- 2
- 1



- 11
- 10
- 9
- 8
- 7
- 6
- 5
- 4
- 3
- 2
- 1



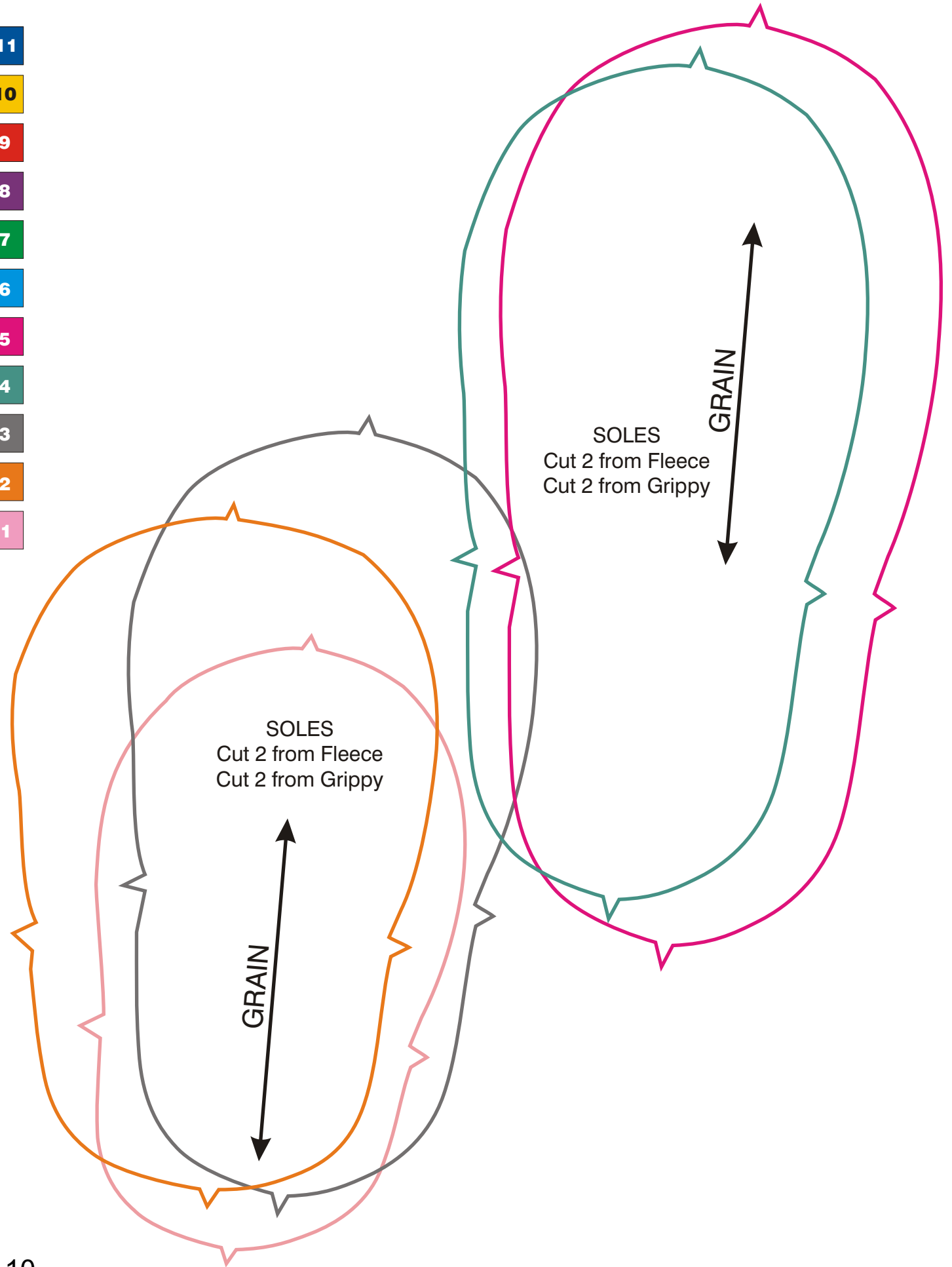
- 11
- 10
- 9
- 8
- 7
- 6
- 5
- 4
- 3
- 2
- 1



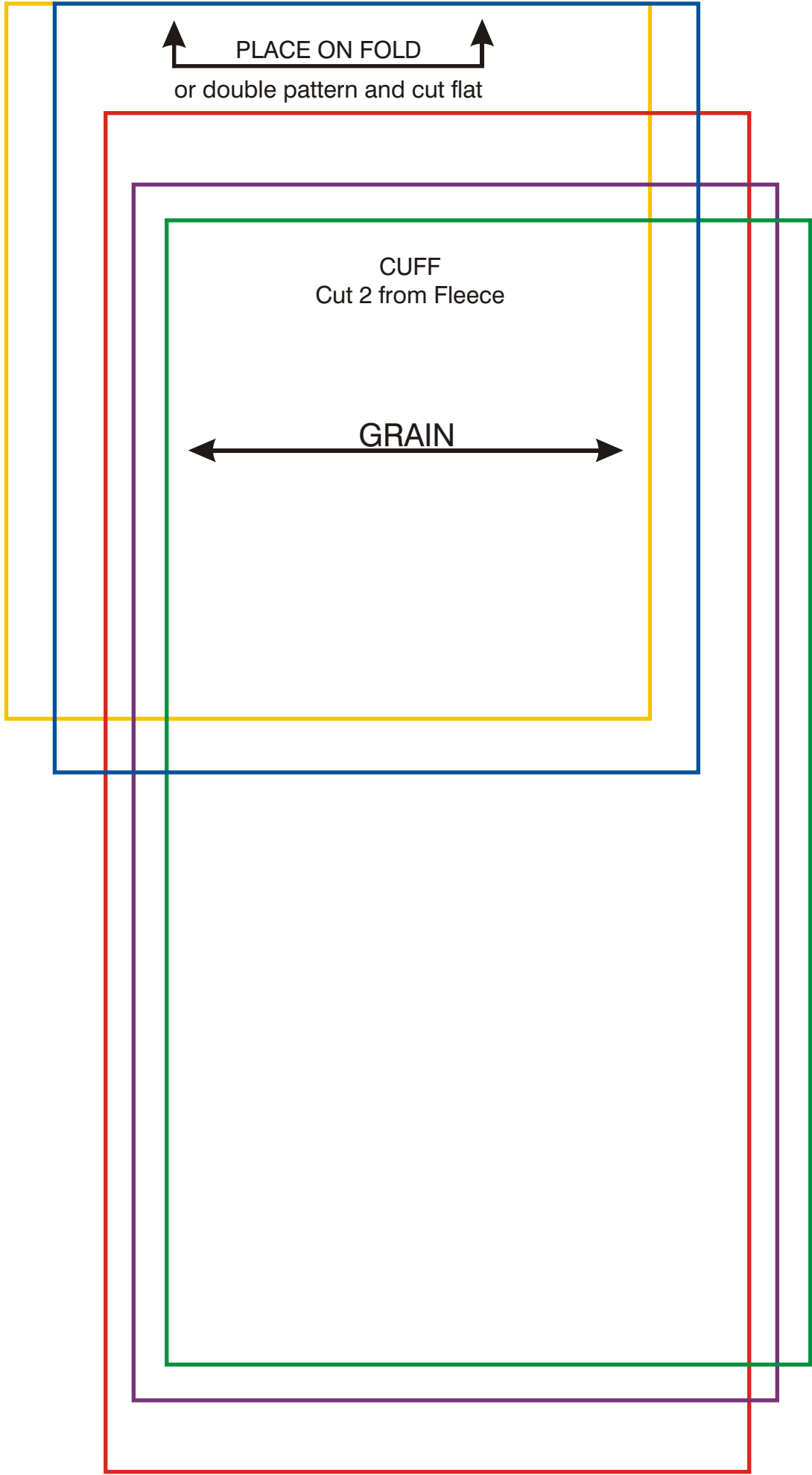
- 11
- 10
- 9
- 8
- 7
- 6
- 5
- 4
- 3
- 2
- 1



- 11
- 10
- 9
- 8
- 7
- 6
- 5
- 4
- 3
- 2
- 1



- 11
- 10
- 9
- 8
- 7
- 6
- 5
- 4
- 3
- 2
- 1



- 11
- 10
- 9
- 8
- 7
- 6
- 5
- 4
- 3
- 2
- 1

